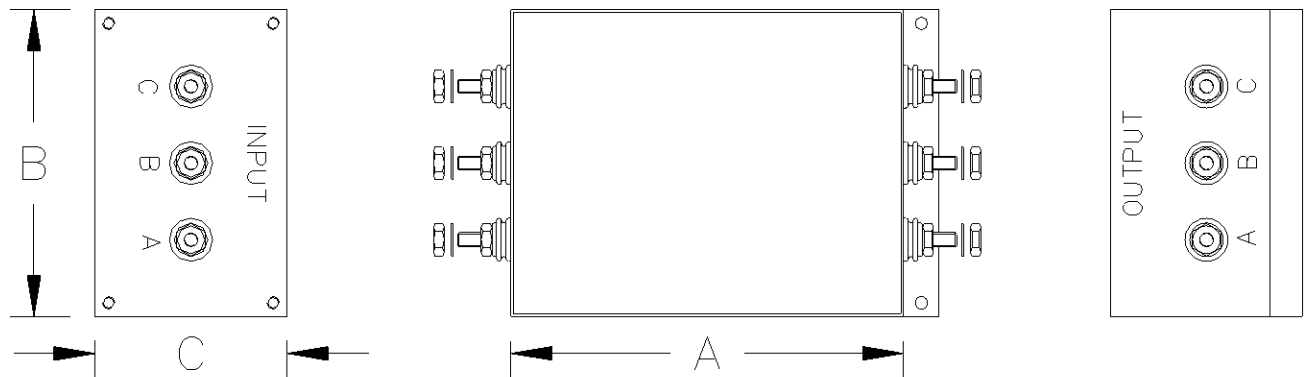


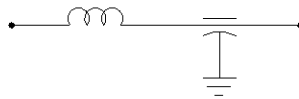
## EMI Filters 120/208 VAC Three Phase



### Specifications

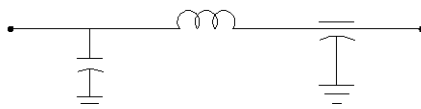
<ul style="list-style-type: none"> <li>◆ Voltage Rating</li> <li>◆ Visual/Mechanical</li> <li>◆ Insulation Resistance</li> <li>◆ DWV</li> <li>◆ Insertion Loss</li> <li>◆ Voltage Drop</li> <li>◆ Terminal Strength</li> <li>◆ Operating Temperature</li> <li>◆ Storage Temperature</li> <li>◆ Threaded Terminals</li> <li>◆ Threaded Inserts</li> <li>◆ Bracket Mounting Holes</li> <li>◆ Chassis &amp; Terminal Finish</li> <li>◆ Chassis Material</li> </ul>	<p>120/208 VAC @ 50/60 Hz and 400 Hz</p> <p>Per MIL-PRF-15733, paragraph 4.6.1</p> <p>1500 MΩ minimum per MIL-STD-202, Method 302</p> <p>1000 VDC line-to-line &amp; line-to-chassis per MIL-STD-202, Method 301</p> <p>Per MIL-STD 220</p> <p>Less than 1% of rated voltage per paragraph 4.6.8 of MIL-PRF-15733</p> <p>Per MIL-STD-202, Method 211</p> <p>-55° C to +71° C</p> <p>-55° C to +105° C</p> <p>10-32UNF-2A</p> <p>10-32UNF-2B</p> <p>0.203" Diameter</p> <p>Electro Tin-Lead</p> <p>CRS</p>
---	---

### Single L



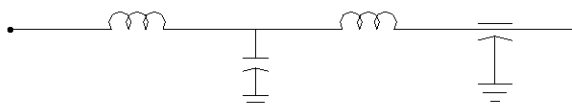
Captor Part Number	Current Rating Amps	A	B	C	Insertion Loss Curve
A-8952	1	3.00	3.50	1.50	Fig. 1
A-8953	5	3.50	3.50	1.50	Fig. 1
A-8954	10	4.00	3.50	2.00	Fig. 1
A-8955	15	4.50	4.00	2.50	Fig. 1
A-8956	25	4.50	6.00	2.50	Fig. 1

### Single $\pi$



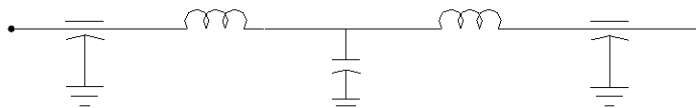
Captor Part Number	Current Rating Amps	A	B	C	Insertion Loss Curve
A-8957	1	3.50	3.50	1.50	Fig. 2
A-8958	5	4.00	3.50	1.50	Fig. 2
A-8959	10	4.50	3.50	2.00	Fig. 2
A-8960	15	5.00	4.00	2.50	Fig. 2
A-8961	25	5.00	6.00	2.50	Fig. 2

### Double L



Captor Part Number	Current Rating Amps	A	B	C	Insertion Loss Curve
A-8962	1	4.00	3.50	1.50	Fig. 3
A-8963	5	5.25	3.50	2.00	Fig. 3
A-8964	10	6.50	3.50	2.25	Fig. 3
A-8965	15	7.25	4.00	3.00	Fig. 3
A-8966	25	7.25	6.00	3.50	Fig. 3

### Double $\pi$



Captor Part Number	Current Rating Amps	A	B	C	Insertion Loss Curve
A-8967	1	5.50	3.50	2.00	Fig. 4
A-8968	5	7.00	3.50	2.00	Fig. 4
A-8969	10	6.50	5.25	2.25	Fig. 4
A-8970	15	7.25	5.50	2.50	Fig. 4
A-8971	25	9.00	6.00	3.00	Fig. 4

# EMI Filters 120/208 VAC Three Phase

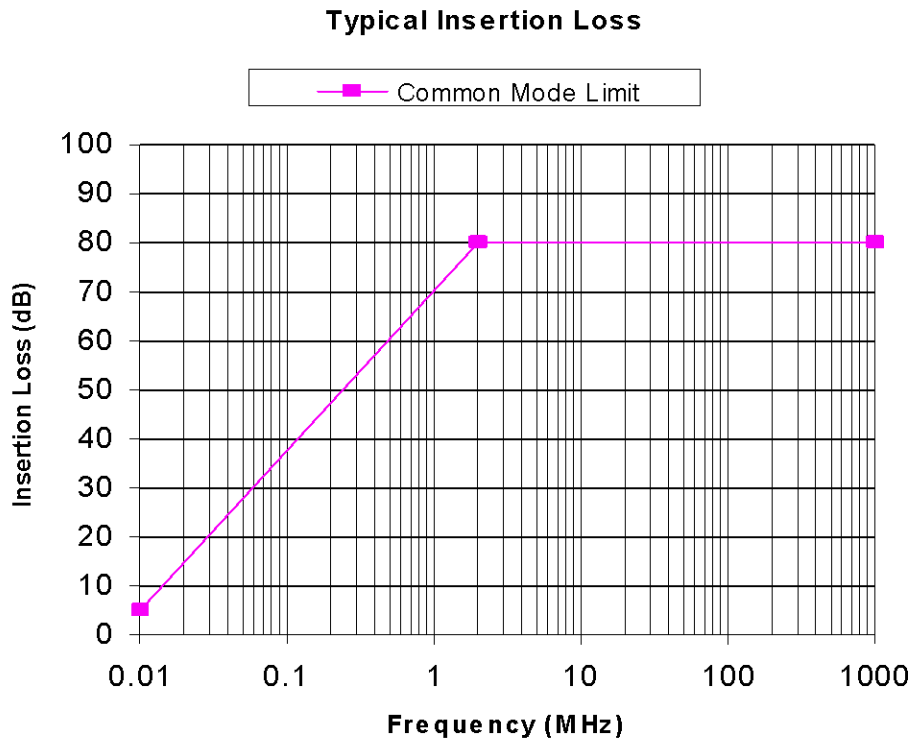


Figure 1

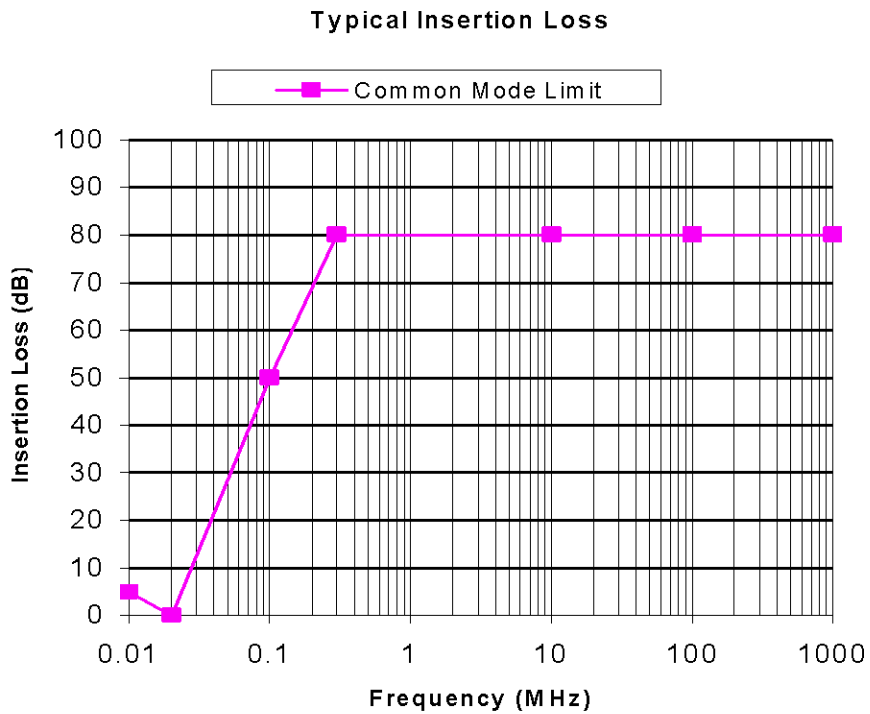


Figure 2

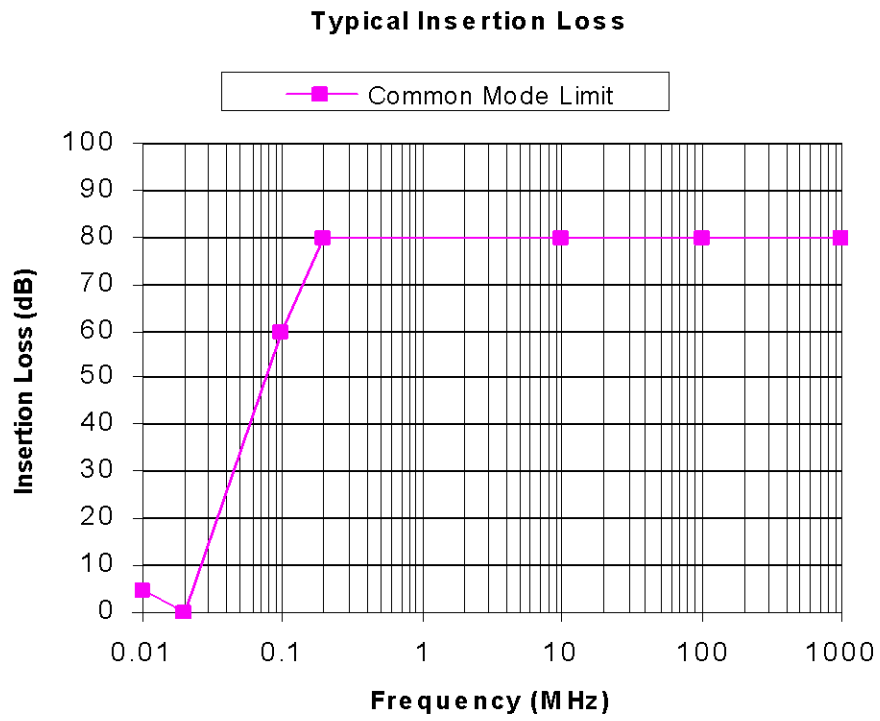


Figure 3

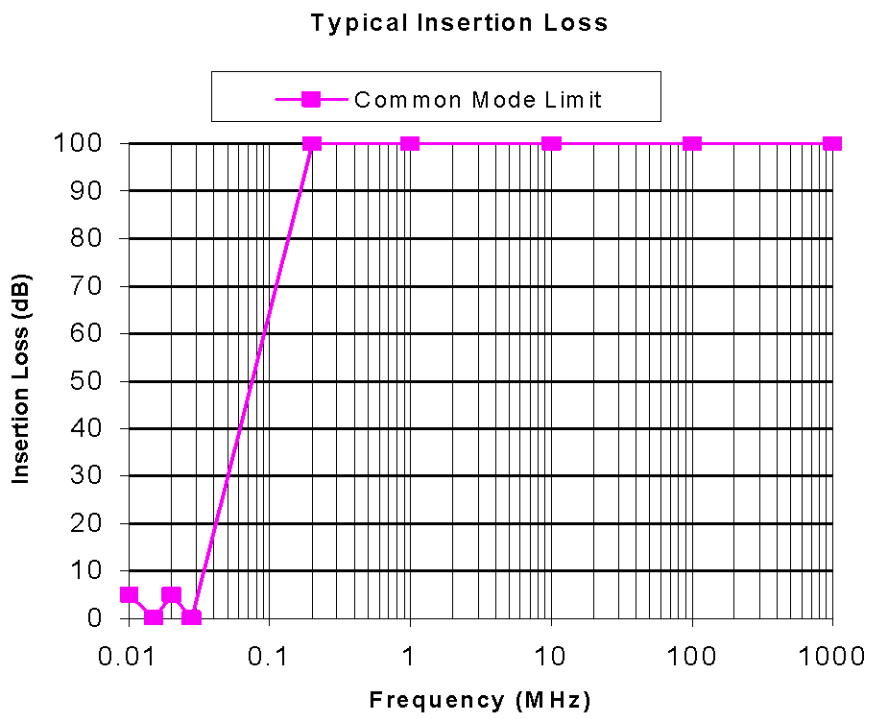


Figure 4